

SPRING BALANCER

Professional Tool

Tigon Instruction manual

TIGON SPRING BALANCER

INSTRUCTION MANUAL

MODEL TW-3, TW-5

Specifications

MODEL	CAPACITY		STROKE		NET WEIGHT	
	kg	lb	m	ft	kg	lb
TW-3	1 ~ 3	2.2 ~ 6.6	1.3	4.3	1.4	3.1
TW-5	2.5 ~ 5	5.5 ~ 11	1.3	4.3	1.5	3.3

- Read all instructions before operating tool.
- Keep this instruction manual with your tool.
- These specifications and design may be changed for improvement without prior notice.

MijIN system Co.,LTD.

Head Office / Plant : 53-1, Jeil-Ri, Yangji-Myun, Cheoin-Gu, Yongin-City, Kyunggi-Do, Korea

TEL : 82-31-335-8787 FAX : 82-31-336-0821

<http://mijinsys.co.kr>




CONTENTS

1. SAFETY INSTRUCTIONS	
1-1. Spring Balancer Installation	2
1-2. Directions for the use of Spring Balancer	2
1-3. Maintenance and Inspection	3
1-4. Disuse	3
2. USEAGE	3
3. CHECK THE CONTENTS OF THE PACKAGE	3
4. INSTALLATION	
4-1 Spring Balancer Installation (Figure-1)	3
4-2 Tool and Device attach and adjustment of spiral spring tension (Figure-2)	4
4-3 Secure work space	4
5. HOW TO OPERATE	
5-1 Tool or Device Replacement	4
5-2 Cable Replacement (Figure-3)	5
6. SOLUTIONS FOR TROUBLES	
6-1 Solution for Getting Cable between drum and case	5
6-2 Disassembly and Assembly	5
7. MAINTENANCE AND INSPECTION	5
8. PURCHASING OF PART	6

Thank you for your purchasing Nitto Kohki-Mijin's spring balancer **TIGON**.

◆ Before using our spring balancer, please read this manual carefully so that you may use it properly to get the most out of it.


The following safety notations are used throughout the manual to highlight safety precautions for the user and for the machine.

 DANGER	DANGER indicates a potentially hazardous situation which, if not avoided by following the instructions given, could result in death or serious injury.
 WARNING	WARNING indicates a potentially hazardous situation which, if not avoided by following the instructions given, could result in death or serious injury.
 CAUTION	CAUTION indicates a potentially hazardous situation which, if not avoided by following the instructions given, could result in injury or material damage.


1. SAFETY INSTRUCTIONS(Spring Balancer)

- Important safety instructions for all spring balancers
- When using spring balancers, basic safety precautions should always be followed to reduce risk of personal injury.

1-1 Spring Balancer Installation

<p style="text-align: center;"> WARNING</p> <ul style="list-style-type: none">● Install the balancer correctly. Incorrect installation could cause personal injury or damage to the Spring Balancer or other equipment.● Install secondary wire rope or chain to the spring balancer. If the spring balancer's main hanger of fitting links damaged, it could protect workers' safety from accidents.● Make sure that the assist wire rope or secondary chain should be suspended. different fitting link from the Spring Balancer's main hanger.● Make sure that there is enough slack in assist wire rope or secondary chain, so that it is able to be movement spring balancer freely. In this install, if the main hanger break or fall down, the enough slack could be stopped before being injury to workers or other equipments.● Install stronger fitting link than the maximum capacity of the Spring Balancer.● The fitting link must be closed so that it does not fall when even Spring Balancer's shakes.● Do not fix the main hanger of Spring Balancer which can swivel freely.
--

1-2 Directions for the use of Spring Balancer

<p style="text-align: center;"> WARNING</p> <ul style="list-style-type: none">● Never pull down the cable while being unloaded.● Never remove the tool from the Spring Balancer's hook while the wire rope is suspended. The fast winding of cable could cause personal injury when you let go the cable.● Never stay right under the suspended spring balancer and tool.● Never Alter the Spring Balancer.
--

⚠ CAUTION

- Always use within the capacity range of the Spring Balancer.
- Always adjust the spiral spring tension before using the Spring Balancer.
- Do not pull down the cable over its maximum weight.
- Do not pull down the cable aslant
- Do not use more than two tools for one unit Spring Balancer.

1-3 Maintenance and Inspection

⚠ WARNING

- Do inspect the Spring Balancer on a regular basis.
Stop using, if there is abrasion or damage on Cable or Hook.
- Never alter or disassemble the Spring Balancer.
- There is a spiral spring in the body of Spring Balancer.
When you have the Spring Balancer disassembled, the sudden expansion of the spiral spring is caused personal injury.
- It better not to disassemble for end user.
If you need your Spring Balancer to repair, contact your sales agency of Nitto Kohki-Mijin
- If any label or name plate is damaged, contact your sales agency of Nitto Kohki-Mijin.

1-4 Disuse

⚠ WARNING

- Contact your disposal dealer, in case of disuse Spring Balancer. There is a sudden expansion of the spiral spring, when you have the Spring Balancer disassembled is the cause of danger or damage.

2. USEAGE

Spring Balancer is a tool which has a tool suspended using like as electric tool, air tool and other device by its weight.

3. CHECK THE CONTENTS OF THE PACKAGE

When you pick the new balancer out from the box, you should check the contents and the condition such as breakages or oil leakages during on transportation. You may refer the contents to the part list of manual. If you have any problem with our Spring Balancer, contact your sales agency.

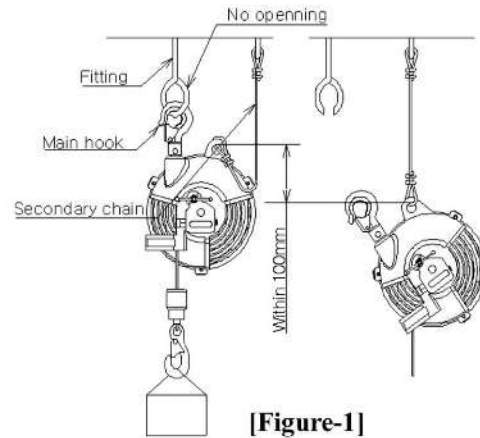
4. INSTALLATION

4-1 SPRING BALANCER INSTALLATION (Figure-1)

⚠ WARNING

- You should install the Spring Balancer which has enough strength and strong fitting link from its capacity range. Secure at least 10 times of the strength for the Spring Balancer's maximum capacity.
- The fitting link must be closed so that it does not fall when even spring balancer's shake.
- Make sure that there is enough slack in assist wire rope or secondary chain, so that it is able to be movement spring balancer freely.
- Do not fix the main hanger of spring balancer. Be free for movement freely.
- Avoid possibility of collision with other spring balancer in horizontal movement on the rail.

- 1) Attach the main hook of the spring balancer to the fitting link.
- 2) Check the Spring Balancer which can move (rotation or gradient) freely.
- 3) Attach an end of the wire rope or secondary chain to the spring balancer's body.
- 4) Attach the other end of the wire rope or secondary chain to a separate fitting link which does not support the spring balancer.
- 5) Check the spring balancer working smoothly with suspended tool.



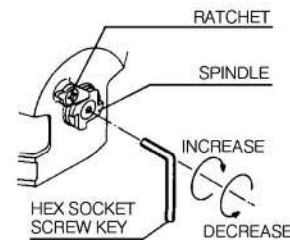
[Figure-1]

⚠ CAUTION

- Use within the capacity range of the Spring Balancer. In this case, figure up the total weight not only tool, device and accessories (Air hose, wire etc) but also the Spring Balancer's weight.

4-2 Tool and device attach and adjustment of spiral spring tension. (Figure-2)

- 1) Make sure that whether tool or device has capacity range within the Spring Balancer's range.
- 2) Adjust the spiral spring tension to be in accord with tool or device.
 - ▣ Adjust the spiral spring tension with Hex. socket screw key(4mm).
 - ▣ Turn clockwise for increasing the spiral spring tension, and turn counter-clockwise for decreasing it.
- 3) Lift up the Tool or Device to the fitting link.



[Figure-2]

⚠ WARNING

- Keep checking on that there is no person or object under the hook, when you attach the hook or release the manual stopper lock.
- ☞ If the weight of the tools or device on the hook(CARABINER) is heavier than the maximum spring tension, it could drop and cause personal injury.

4-3 Secure work space

⚠ CAUTION

- Excessive cable's exposure or the maximum stroke of the cable could cause damage to the Spring Balancer and its life would be shortened.
 - ▣ Check that the working is in cable stroke range.
 - ▣ If necessary, adjust the height of Spring Balancer or use a suitable Jig between the hook and tool.

5. HOW TO OPERATE

5-1 Tool or device replacement

⚠ DANGER

- Never release the tool on cable's exposure. If tool release while cable's exposure, the fast winding of the cable would cause personal injury.

- 1) Remove the tool while cable has been winding on drum
- 2) Make sure that whether tool or device has capacity range within the Spring Balancer's range.

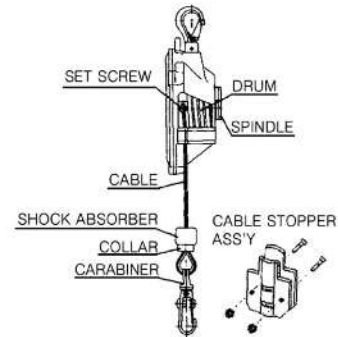
- 3) Adjust the spiral spring tension to rotate spindle with HEX. SOCKET SCREW KEY(4mm)
 - Turn clockwise for increasing the spiral spring tension and turn counterclockwise for decreasing it.
- 4) Attach the tool or device to the spring balancer carabiner.

5-2 Cable Replacement (Figure-3)

⚠ CAUTION

- Cable replacement could be done without the product disassembly.
 - ☞ If you need Spring Balancer's disassembly, the spiral spring tension should be situated at "0(zero)" and to do according to "6-2 DISASSEMBLY AND ASSEMBLY.

- 1) Make the spring's tension to zero by pulling down cable.
- 2) Remove the tool from the hook after checking of spring's tension removing.
- 3) Remove the cable set screw (plug) and pull out the cable from the drum.
- 4) Separate the collar and shock absorber from old cable and assemble the new cable.
- 5) Attach the cable to the drum of inside of the case.
- 6) Assemble the cable set screw (plug).
- 7) The assembly is in reverse order of disassembly.



[Figure-3]

6. SOLUTIONS FOR TROUBLES

⚠ WARNING

- Stop your working and take precautions when you have trouble in using Spring Balancer.
- Never release Tool or Device until you find out the cause of trouble.

6-1 Solution for Getting Cable between drum and case

- 1) Pull down the cable when the tool is suspended on it.
- 2) When you can't pull down the cable, you can replace the cable after disassembling to be followed item 6-2
- 3) If necessary, replace the cable which checks the wire status. Make sure that in cases of the wire twist or kink of trace, you must replace it.

6-2 Disassembly and Assembly

⚠ WARNING

- Stop your working and take precautions when you have trouble in using Spring Balancer.
- Never release Tool or Device until you find out the cause of trouble.

- 1) Adjust the Spindle until spring's tension to zero.
- 2) Remove the tool.
- 3) Disassemble cable according to 5-2 cable replacement.
- 4) Release the bolt which connects the case and the cover . And disassemble the cover.
- 5) Disassemble the spindle.
- 6) Release the bolt which connects the drum and the drum cover. And disassemble the drum.
- 7) The assembly is in reverse order of disassembly.

7. MAINTENANCE AND INSPECTION

Periodically inspect the Spring Balancer and replace any abrasion or damaged parts.

⚠ WARNING

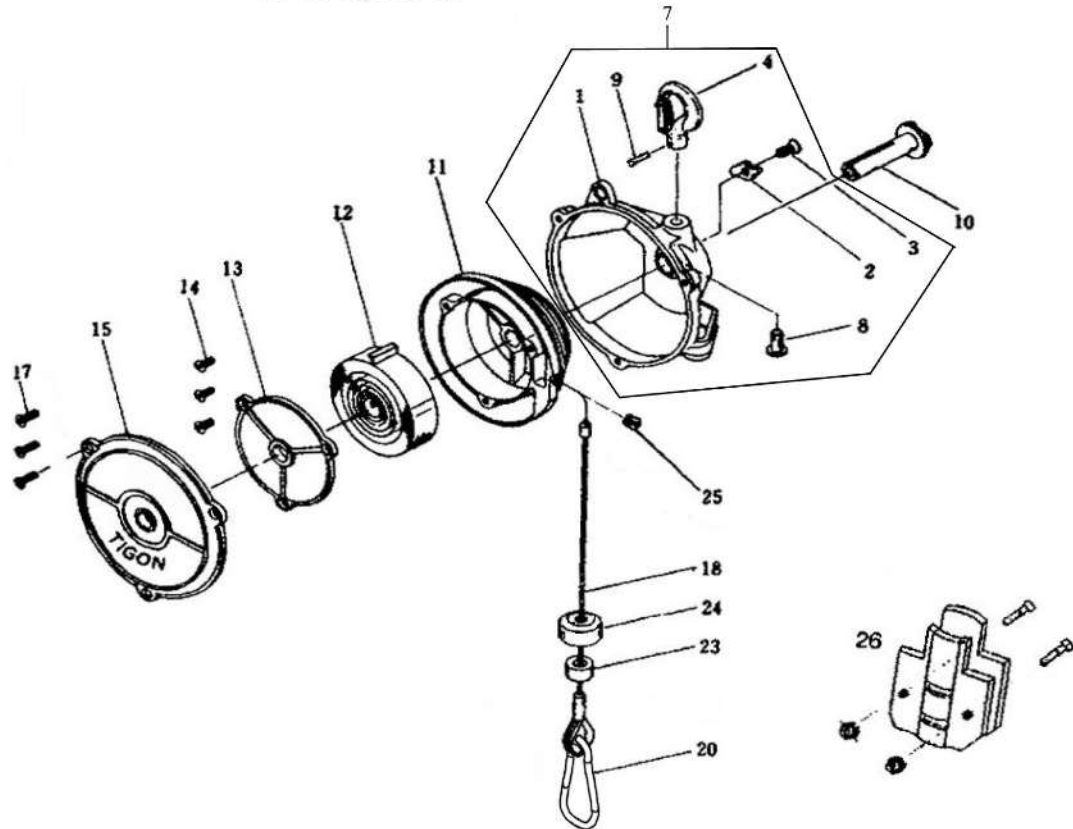
- Periodically inspect the balancer, and replace any worn or damaged parts.
- Always use genuine parts for replacement.

8. PURCHASING OF PART

Please purchase a set or complete unit.

The repairs are required to be worked by qualified person who is well trained.

Exploded View & Part List **TW-3,TW-5**



The part number which is inside of () are the components of ASS'Y.

No.	Part No	Description	Q'ty
7	TB06214	CASE ASS'Y	1SET
1	(TQ08290)	CASE	1
2	(TQ08308)	RATCHET	1
3	(TQ08709)	+ COUNTER SUNK HEAD SCREW	1
4	(TB06216)	MAIN HANGER SUB ASS'Y	1SET
8	(TQ08296)	HANGER SHAFT	1
9	(TQ08509)	RIVET	1
10	TQ08309	SPINDLE	1
11	TQ08298	DRUM	1
12	TQ08300	SPIRAL SPRING TW-3	1
	TQ08000	SPIRAL SPRING TW-5	1
13	TQ08299	DRUM COVER	1
14	TQ08708	+ COUNTER SUNK HEAD SCREW	3

No.	Part No	Description	Q'ty
15	TQ08310	CASE COVER	1
17	TQ08563	+COUNTER SUNK HEAD SCREW	3
18	TB06219	CABLE SUB ASS'Y	1
20	TQ08263	CARABINER	1
23	TQ08307	COLLAR	1
24	TQ08306	SHOCK ABSORBER	1
25	TQ08710	SET SCREW	1

ACCESSORY

26	TB06220	CABLE STOPPER ASS'Y	1
	TQ08331	INSTRUCTION MANUAL	1
	TQ08315	LABEL Tigon TW-3	1
	TQ08334	LABEL Tigon TW-5	1



MIJIN SYSTEM CO., LTD.

53-1, JEIL-RI, YANGJI-MYUN, YONGIN-CITY, KYUNGGI-DO,
KOREA

TEL : 82-31-335-8787 FAX : 82-31-336-0821/2

EC DECLARATION OF CONFORMITY

We hereby declare that the following our product conforms with the essential health and safety requirements of EEC Directives.

Product : 1. SPRING BALANCER
: TW-00 / TW-0 / TW-3 / TW-5 / TW-9 / TW-15 / TW-22 / TW-30
TW-40 / TW-50 / TW-60 / TW-70 / TW-90 / TW-105 / TW-120
2. RETRACTOR
: RW-0 / RW-3 / RW-5 / TW-06R / TW-1R / TW-2R
3. HOSE REEL BALANCER
: HW-0 / HW-3 / HW-5

Serial No : X X X X X X X X
→ Consecutive numbers(001~999)
→ The month of manufacture(A~M)
→ The year of manufacture(00~99)
→ Model

Manufacturer : MIJIN SYSTEM CO., LTD.
53-1, JEIL-RI, YANGJI-MYUN, YONGIN-CITY, KYUNGGI-DO, KOREA

Directive : 98/37/EC and 2006/42/EC Machinery Directive

The above product has been evaluated for conformity with above directives using the following European standards. The technical construction file (TCF) for this product can be furnished from nitto kohki-mijin which kindly note.

Machinery Directive : EN ISO 12100-1: 2003, EN ISO 12100-2 : 2003
EN ISO 14121-1: 2007, EN ISO 13850: 2008

Signature :



Date :

 /Seoul, Korea

Name :

Bong Sik Kim

Title :

President

Being the responsible person appointed and employed the manufacturer.

TQ08332-3